

R A R D O

ARCHITECTS

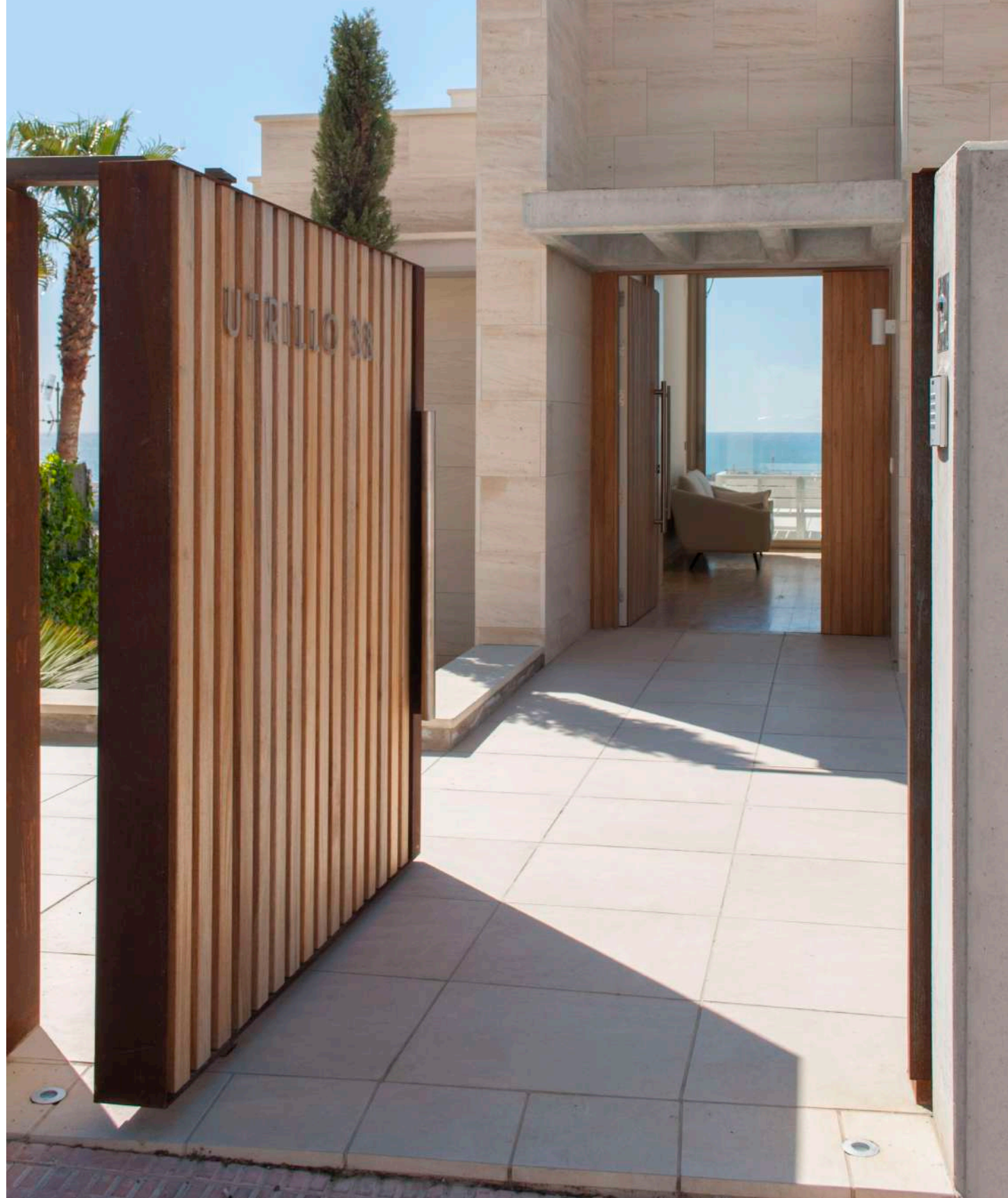
ARCHITECTURE & FINE INTERIORS
BARCELONA & SITGES

ARCHITECTURE + DESIGN + INTERIORS

A family villa in Vallpineda

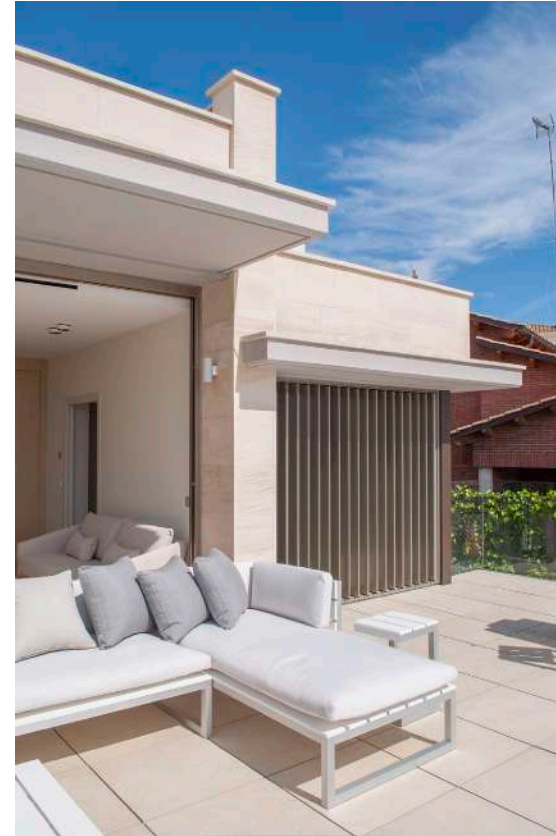
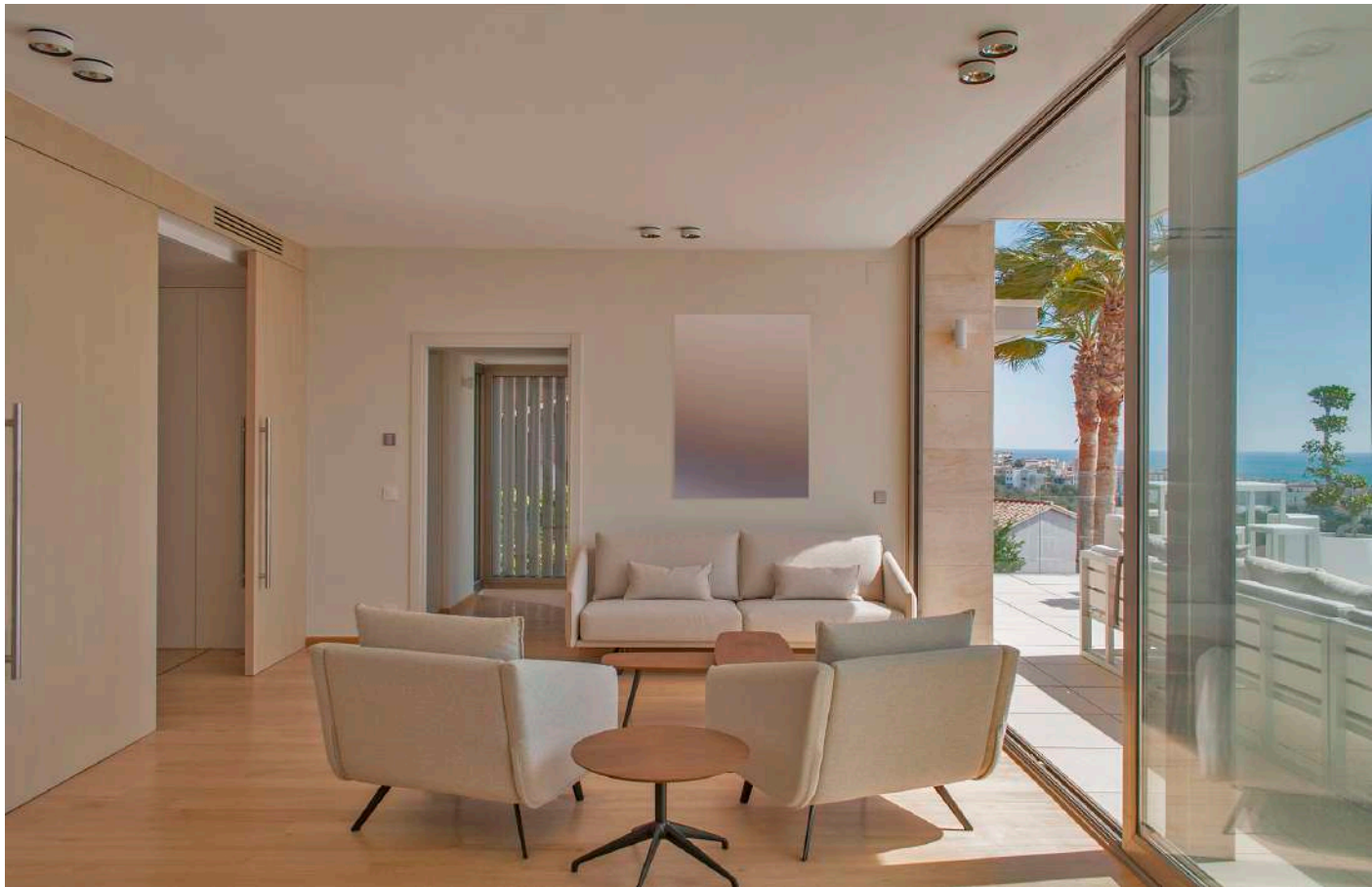
Year of project 2017

Surface 380 m²



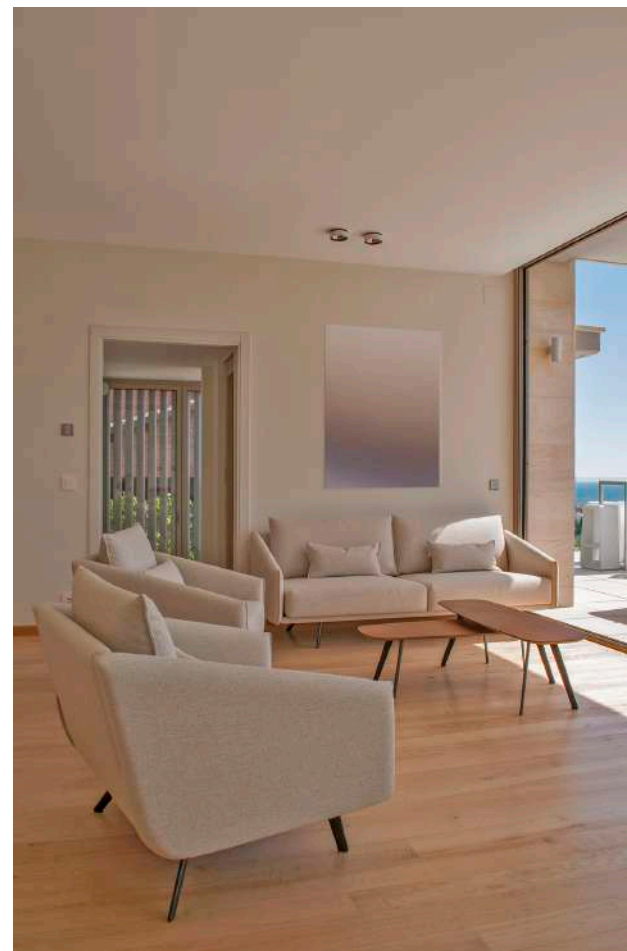
We conceived this house as terraced spaces that would make the most of this plot with a strong slope. Built as summerhouse, its owners wished to have a sense of outdoors in every level.

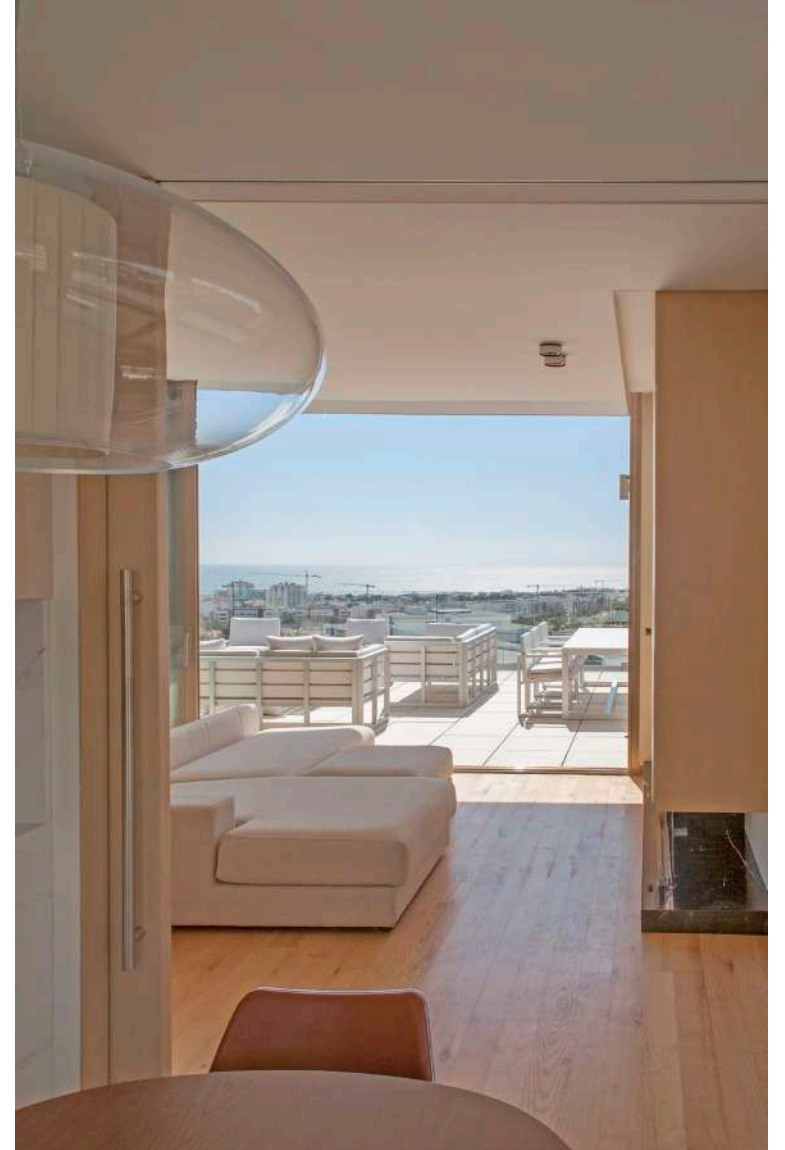
From a structural point of view, our challenge was to fit a garage underground unlike the most obvious location at the street level as it is commonly done.



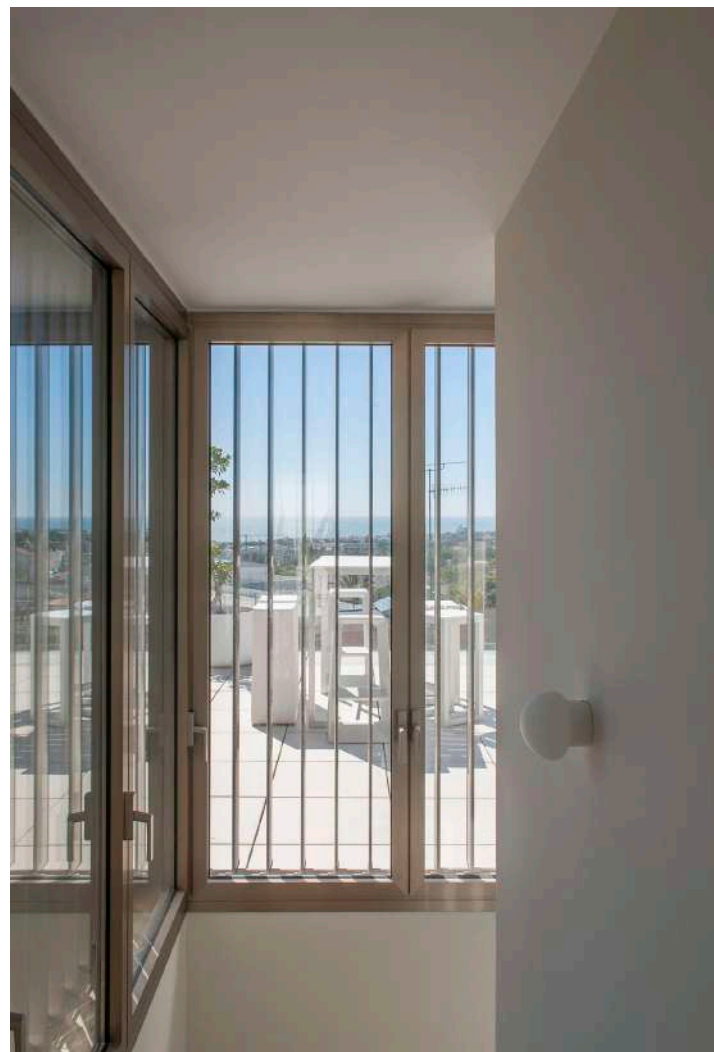
We designed the interior architecture of all three floors, improving the use of the environments with special effort in reconnecting the house with its exterior spaces.

On the upper level, we created the the day time space of the house with an entrance, kitchen and dining, and lounge spaces directly linked to the roof of the bedrooms below, which acts as an large terrace space.



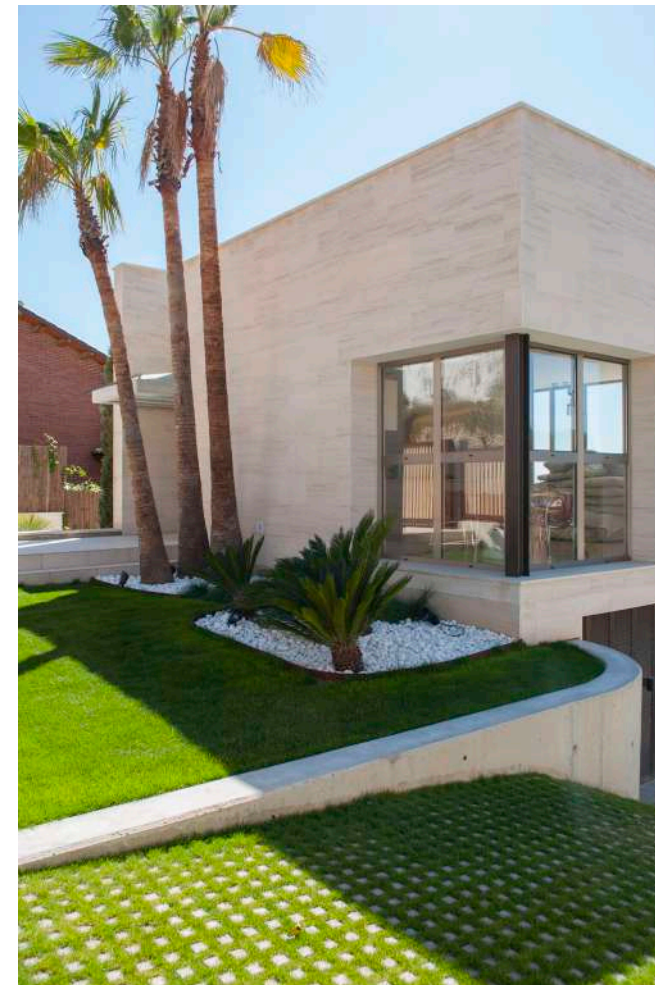
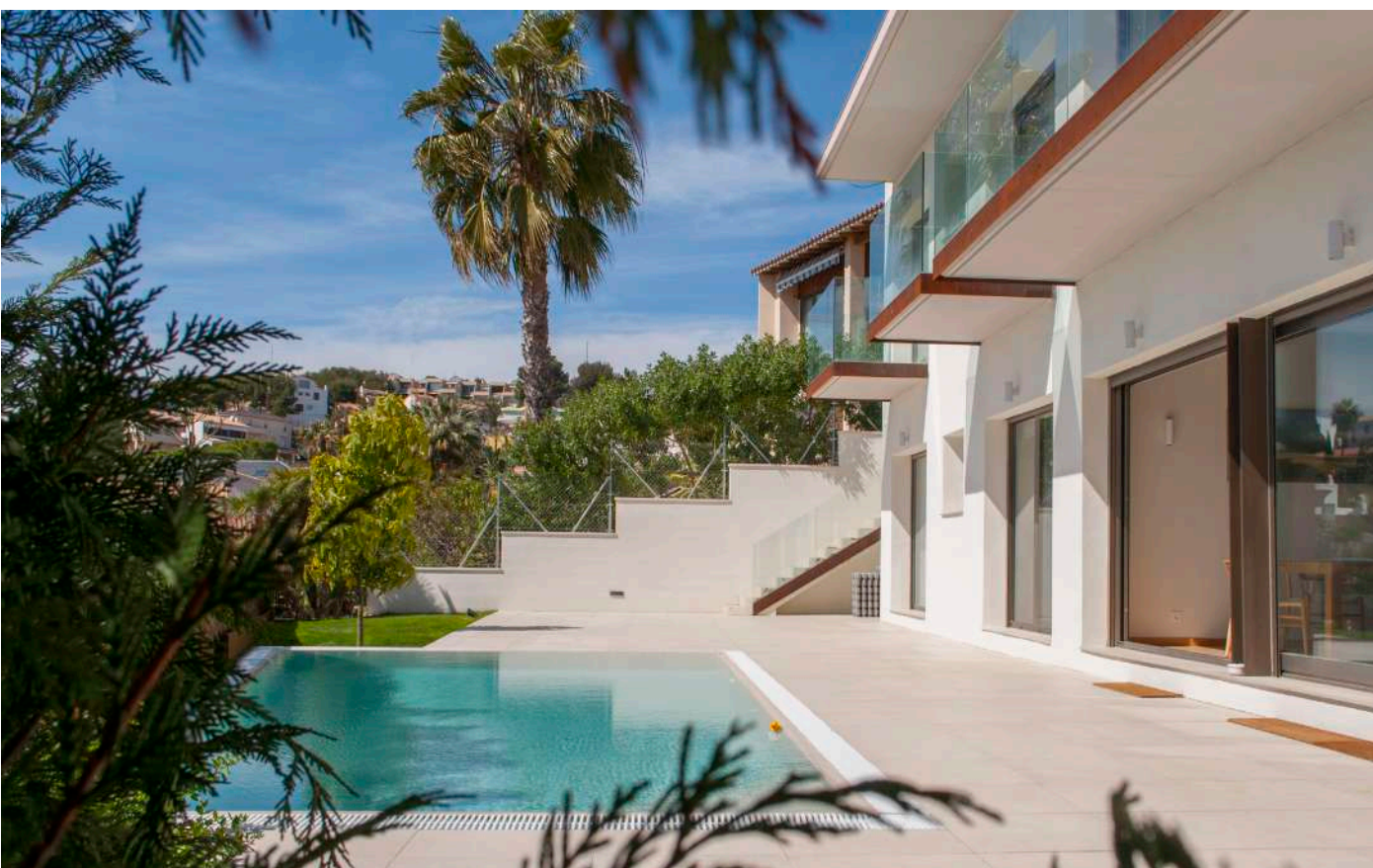
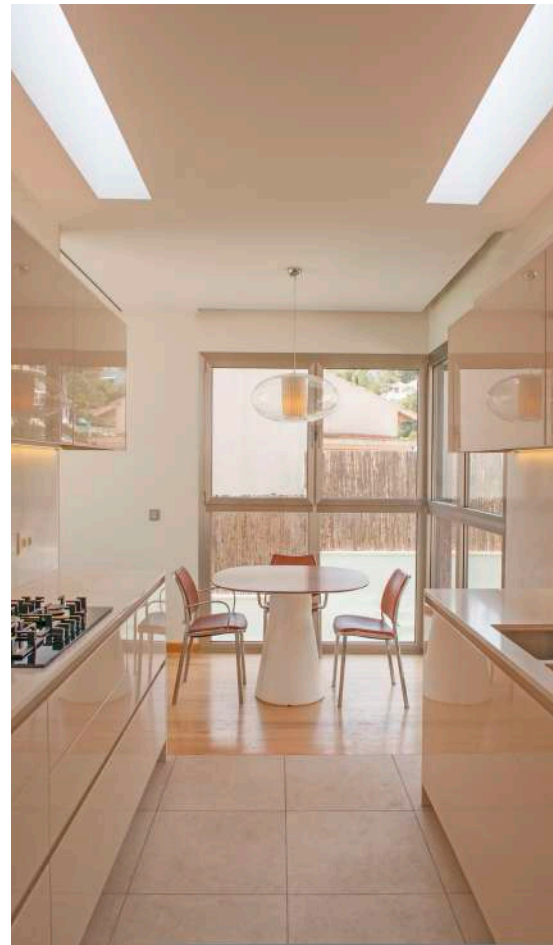


The Mediterranean inspired us to design a house full of natural light. From the outset, the clients professed a series of emotional and functional requirements: they wished to have new dynamic and fluid living spaces, and able to adapt to everyday life.



"Amazing experience with RARDO-Architects team. They combined fabulous creativity with the practicalities of materials and local and reliable contractors. We cannot recommend them enough! Very happy with our new home, it was designed to perfection."

– Rebecca, London



They wanted to have a nice place to cook, share and enjoy life outdoors. That is why we designed a kitchen with fluid connection towards the dinning area and the lounge.

We implemented natural materials such as marble and solid oak along with a fireplace to create a comfortable environment.

We opened large windows towards the garden to take full advantage of the incoming natural light and sea views

Family house in La Plana Sitges, Barcelona

Year of project: 2020

Surface: 320 m²



The team of architects at RARDO-Architects was commissioned to work on this plot in the La Plana area, a new development by the Mediterranean sea in Sitges, near Barcelona. It is a large 600 m² plot with a gentle slope slightly elevated from the sea level and beautiful views of the city and the old town.

The new volume is configured using a series of mid-levels that gently emerge from the ground as a solid, opaque ensemble that becomes more transparent as it rises above ground level. These bodies are oriented creating panoramic views of the sea and the neighborhood, with large concrete overhangs that offer shelter and protect the interior from excess sunlight.



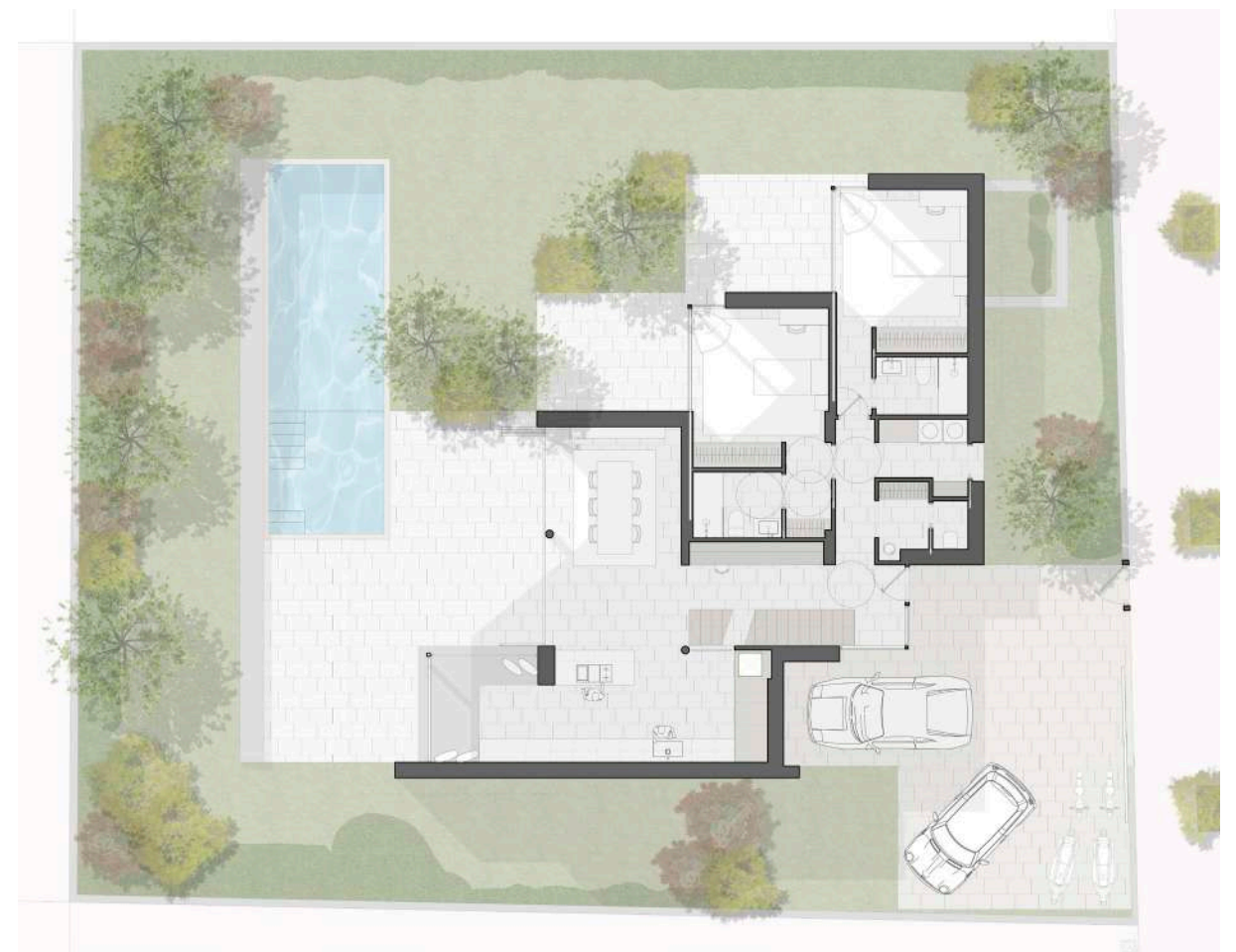


The residential areas of the house are distributed over two floors, with access from the outside located on the lower level, along with most of the rooms for daytime use. These rooms have access to the outdoor terraces, with a pool in the roof, elevated on the ground to equal the upper bound of all the elements. The program proposed by RARDO-Architects also includes a separate guest room located in the ground.





The exterior aspect of the new volume is closed as a fortress from the street, protecting the interior of the house from possible furtive glances from the exterior. Conversely, interior courtyards bring nature and light from the outside to the lower floors. Large landscaped terraces and a light overhang finish configuring the external appearance of the volumes, which are presented terraced on the existing slope, so that the cost of possible earth movements during construction is minimized.





Restoration of a 1880 townhouse in Sitges historic center

— Loft conversion into residence and office space.

Year of project 2017

Surface 165 m²

Intervention: Full-scale refurbishment and
preservation of the original structure

This project covers the intervention and rehabilitation of a neglected property in a 150 years old building, preserving it and giving it a new use as office and residence for a young professional.

The intervention's main feature was to remove layers of plaster and false ceiling that were put over the original structure to leave only the original raw materials.



—

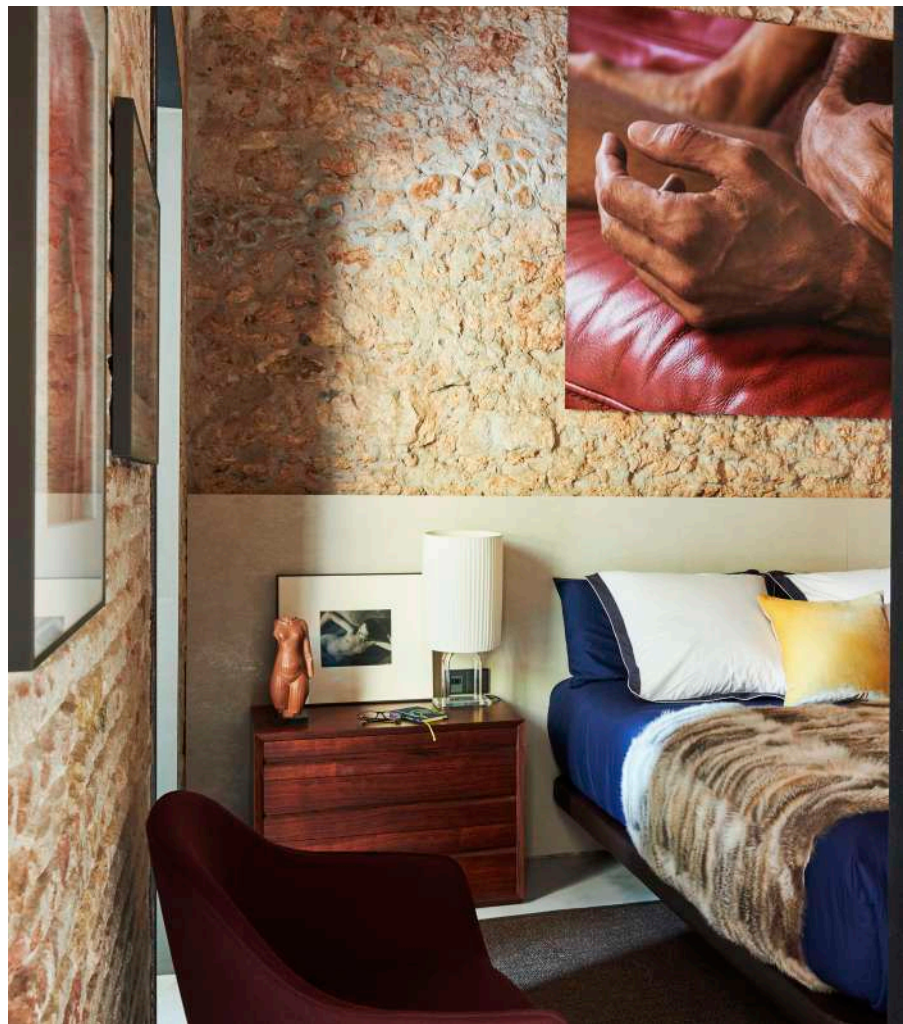
The space was divided in two different parts: the office part is situated in the public area, in the first corridor, acting as a barrier of privacy for the residencial part, that opens to the interior courtyard.





The residencial area is complemented with a kitchen that opens to the dining room; a bedroom separated of the rest of the house with a massive furniture that contains the wardrobe and the kitchen appliances; a high-end bathroom and a living room.





The living room is closed with a big panel windows that opens to the courtyard, making a soft border between interior and exteriors. The pavement combines ceramic tiles and gravel to delimitate the spaces.



The work space, tripped of its damaged cladding, needed to adapt to its new functions.

An apartment by the sea

— Penthouse on one level in Sitges

Year of project 2019

Surface 110 m²

Intervention Full-scale refurbishment



Our architects office in Sitges (Barcelona) was commissioned to reform an old property owned by a couple from Paris. The floor had not only been left behind in its configuration, but also in its facilities and services, which had to be completely redesigned.

After eliminating any previous trace, the RARDO-Architects technicians defined two large differentiated spaces in the house; Firstly, a large living-dining room with an open kitchen, separated from the room area only by the entrance, which acts as a connection nucleus between both spaces.



The main room is separated from the rest of the house by a large sliding door, which allows to isolate the work space, the bathroom and the sleeping area in a simple way, while reinforcing the connection between both spaces by using a lacquered wood paneling on the walls, from the kitchen to the bedroom, with the doors of the guest room and the guest bathroom integrated into it, so that it is a clean and neutral space.

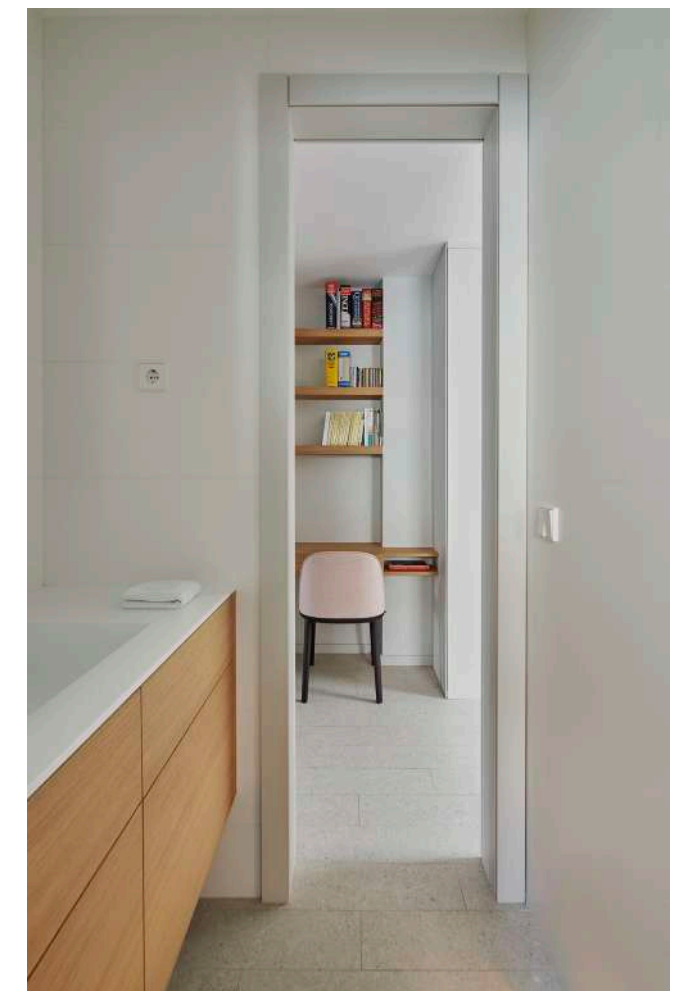
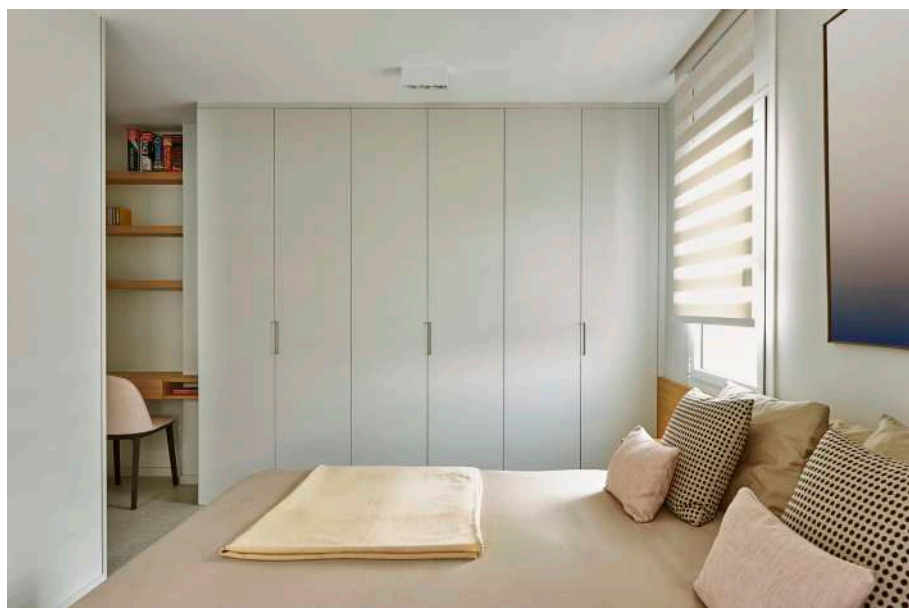
"Gerardo and his team are very creative. What interested me the most was the ability to listen, the power of reflexion and the dynamism of this agency – and, of course, Gerardo's fluent French."

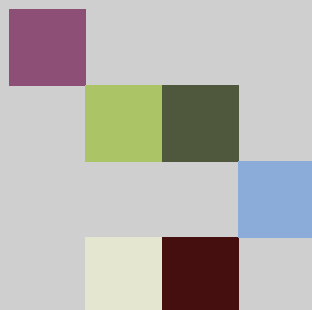
– Jean Michel, Paris





The ensemble is finished off with custom-made cabinets and shelves in neutralized oak, contemporary design furniture, both interior and exterior, chosen by RARDO-Architects in conjunction with the property, and a large open breakfast bar with Silestone worktop, which articulates the large central space.





R A R D O
ARCHITECTS



C. de l'Illa de Cuba 25, Bajos — Sitges
Passatge Madoz 6 — Barcelona

(+34) 935 109 485
mail@rardo-architects.com
rardo-architects.com

